

# Solid - Safe - Secure

**Extreme Event Protection  
Tornadoes - Hurricanes - Intruders**



**SteelClad**  
**SAFE ROOMS™**

Extreme Weather - Intruder Protection



**Storm & Tornado  
Shelter of Texas**

[www.shelters-of-texas.com](http://www.shelters-of-texas.com)

Storm and Tornado Shelters of Texas, Inc. POB 279897, Flower Mound, Texas 75027  
972-539-3524 Toll Free: 1-877-FUNNEL-1 Fax: 800-847-5939 email: [tornado@attglobal.net](mailto:tornado@attglobal.net)

**W**eather can turn violent in minutes. Innovations in Doppler radar, storm tracking and early warning systems deserve credit for saving hundreds of lives in Oklahoma in 1999. Fact is, tornado shelters are pretty common in Oklahoma. In much of Texas, in the heart of tornado alley, shelters are virtually nonexistent.



Location: South of Dimmitt, Texas  
Photo Date: June 2, 1995  
Photographer: Harald Richter  
Credit: NOAA Photo Library, NOAA Central Library

Per FEMA, Having a safe room built into your house can help you protect yourself and your family from injury or death caused by the dangerous forces of extreme winds. It can also relieve some of the anxiety created by the threat of an oncoming tornado or hurricane.

SteelClad SAFE ROOMS™ are safe and secure above ground protection in the event of tornadoes, hurricanes and unwelcome intruders. They provide quick access with easy locking and unlocking from the inside and triple deadbolt security and strength.

SteelClad SAFE ROOMS™ can be installed in a new home, as a room addition to an existing home, integral to commercial structures or as a stand alone above ground building. Each SteelClad SAFE ROOM™ is customized to include your desired lighting and amenities like telephone jacks, cable tv and antenna connections, electrical outlets and ventilation for central heating and air conditioning.

SteelClad SAFE ROOMS™ may be used as a master bedroom closet, a pantry, storage room, home theater or any room where windows are not needed.



Incorporate a SteelClad SAFE ROOM™ into your home for just pennies a day. Who knows, someone might even consider you a hero. Call us today, we're here to help.

**SteelClad**  
**SAFE ROOMS™**

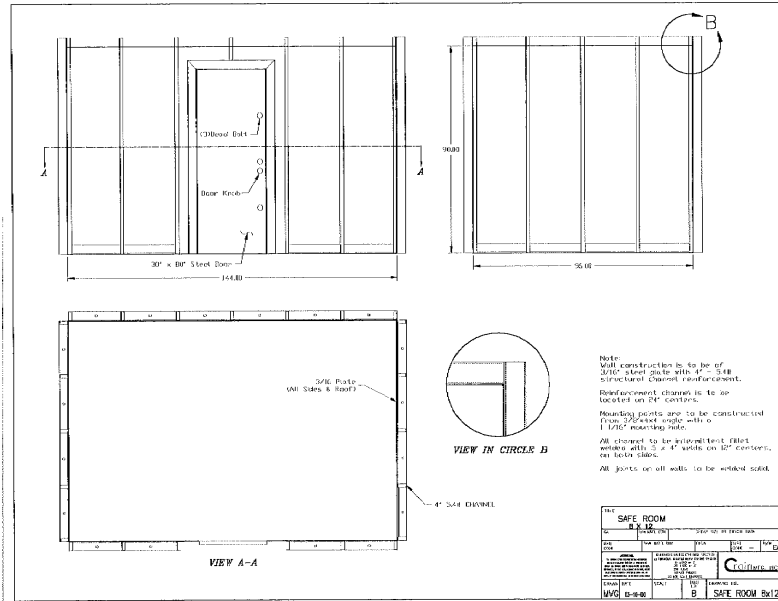
Extreme Weather - Intruder Protection



**Storm & Tornado**  
**Shelter of Texas**

[www.shelters-of-texas.com](http://www.shelters-of-texas.com)

Storm and Tornado Shelters of Texas, Inc. POB 279897, Flower Mound, Texas 75027  
972-539-3524 Toll Free: 1-877-FUNNEL-1 Fax: 800-847-5939 email: [tornado@attglobal.net](mailto:tornado@attglobal.net)



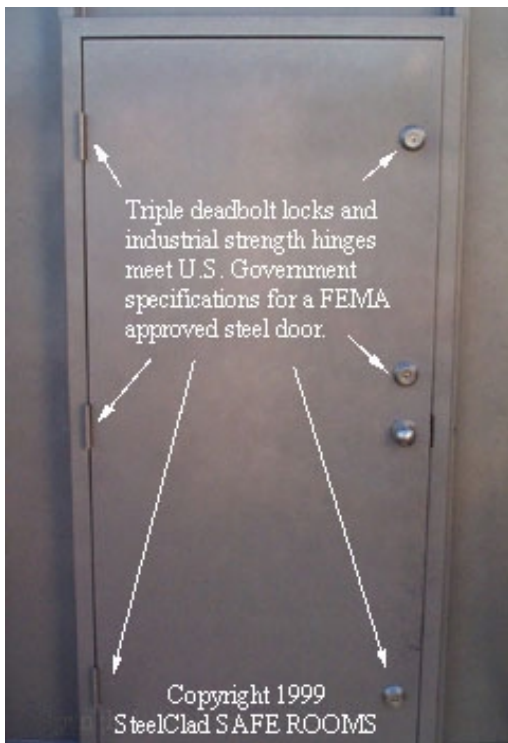
03/10/00 FRI 18:48 FAX 800 820 0050

CRAIN MFG INC.

0001

SteelClad SAFE ROOMS™ are built of incredibly tough plate steel with structural channels welded every two feet. The safe room is anchored to your slab with 'j-bolts', mechanical lag anchors or Simpson Strong-Tie SET threaded rod anchors.

SteelClad SAFE ROOMS™ are designed to be encased in steel reinforced concrete for superior protection against flying debris and projectile penetration. Installation is performed by professional contractors.



The SteelClad SAFE ROOM door is based on FEMA Publication 320. The FEMA approved door design uses a commercial grade 20 gauge steel door. The door is clad with a layer of 14 gauge steel on one side. Three heavy duty hinges and three industrial strength deadbolts ensures the door stays in place during extreme winds and resists prying from the exterior.



**SteelClad**  
**SAFE ROOMS™**

Extreme Weather - Intruder Protection



**Storm & Tornado**  
**Shelter of Texas**

[www.shelters-of-texas.com](http://www.shelters-of-texas.com)

Storm and Tornado Shelters of Texas, Inc. POB 279897, Flower Mound, Texas 75027  
972-539-3524 Toll Free: 1-877-FUNNEL-1 Fax: 800-847-5939 email: [tornado@attglobal.net](mailto:tornado@attglobal.net)



Washington, January 14, 2000 -- The U.S. Department of Housing and Urban Development will provide mortgage insurance to enable homebuyers to borrow up to \$5,000 to create windstorm shelters in their homes, Secretary Andrew Cuomo announced today.

"These storm shelters will save lives and prevent injuries when tornadoes and hurricanes strike," Cuomo said. "HUD is making it possible for more families to place these shelters in their homes." The mortgage insurance will be provided by the Federal Housing Administration, which is part of HUD. Rather than making mortgage loans directly, FHA insures loans made by private lenders to homebuyers.

FHA insurance guarantees a lender timely payment of principal and interest, in the event a homebuyer defaults on a loan. As a result, HUD's new initiative will enable a lender to loan a homebuyer up to \$5,000 more than the amount needed to buy a home, with the extra money used to pay for the cost of installing a windstorm shelter.

Home windstorm shelters -- also known as safe rooms -- can provide protection against winds of up to 250 miles per hour and against projectiles traveling at 100 miles per hour.

FHA insured nearly 1.3 million home mortgages in 1999 at a value of \$124 billion. Homebuyers pay for the insurance with fees, so no taxpayer dollars are used to provide the insurance.

HUD Assistant Secretary for Housing/Federal Housing Commissioner William Apgar today described the requirements for safe room construction at the National Association of Home Builders International Builders Show in Dallas, Texas. The safe room is part of a building and technology product exhibit at the APA, the Wood Engineered Association. The exhibit is called Behind the Walls House.

Designs for the windstorm shelters financed with FHA-insured first mortgages must follow guidelines developed by the Federal Emergency Management Agency, with the cooperation of the Wind Research Center of Texas Tech University. FHA-financed safe rooms must also be consistent with the National Performance Criteria for Tornado Shelters.

Apgar said the Partnership for Advancing Technology in Housing -- a joint federal and private sector initiative administered by HUD -- is working with FEMA to develop and deploy advanced home technology, such as the safe room design.

The safe room project is part of an ongoing FEMA initiative called Project Impact: Building Disaster Resistant Communities. The project is designed to encourage people and communities to take measures to protect themselves and their property before disasters occur.

**SteelClad**  
**SAFE ROOMS™**

Extreme Weather - Intruder Protection



**Storm & Tornado**  
**Shelter of Texas**

**[www.shelters-of-texas.com](http://www.shelters-of-texas.com)**

Storm and Tornado Shelters of Texas, Inc. POB 279897, Flower Mound, Texas 75027  
972-539-3524 Toll Free: 1-877-FUNNEL-1 Fax: 800-847-5939 email: [tornado@attglobal.net](mailto:tornado@attglobal.net)