

“ArmoredGuard”™

Deep Earth Preparedness and Survival Shelter

The “ArmoredGuard” is a deep earth preparedness and survival shelter developed to answer requests from people concerned about protecting their families from extreme events like terrorist attacks, explosions and severe weather. The shelter surface is designed for backyard or under slab installation in new homes.



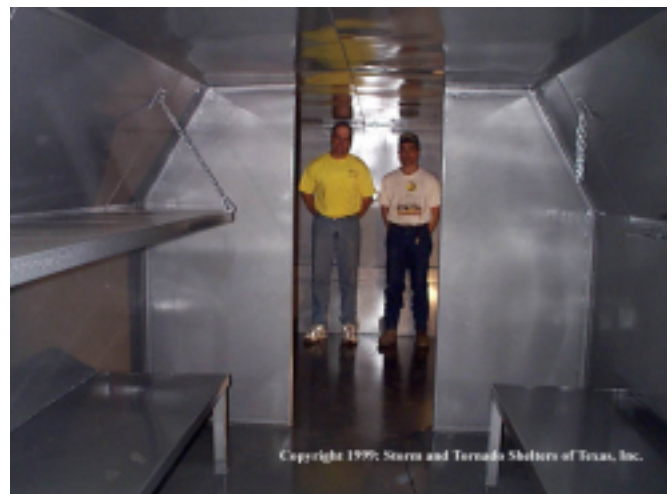
The ArmoredGuard is installed three foot below the surface of the ground and is totally encased in concrete. The extended stairway puts the ArmoredGuard deep in the earth and out of harm’s way.



- Totally encased in concrete
- Three feet below earth’s surface
- Sealable ventilation
- Thick walled ventilation pipes

Optional Features

- Second escape hatch
- Interior compartment and doors
- Chemical toilet
- Built in bunks for long stays



**Storm & Tornado
Shelters of Texas**

www.stormandtornado.com

972-539-3524

Toll Free: 1-877-FUNNEL-1